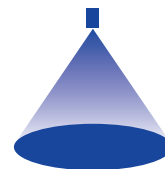


# ➤ Tangential-flow full cone nozzles stainless steel/brass version Series 422/423



## Features:

- Tangentially arranged supply of liquid
- Without swirl inserts
- Non-clogging
- Stable spray angle
- Uniform liquid distribution

## Applications:

- Surface spraying
- Cooling
- Cleaning and washing processes
- Foam control

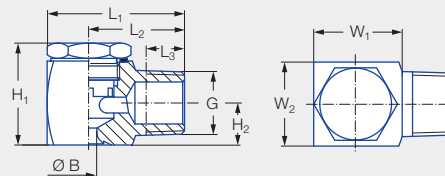
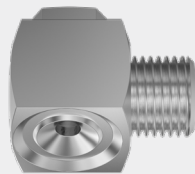


Figure 1

Series 422/423

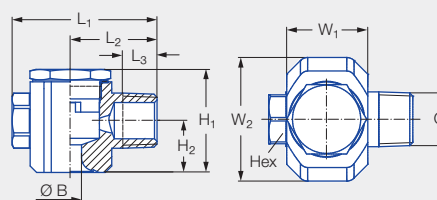
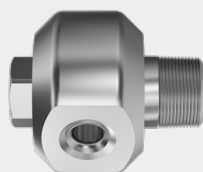


Figure 2

Code	Figure	G	Dimensions [mm]								Weight [g] (stainless steel 316L)
			H <sub>1</sub>	H <sub>2</sub>	L <sub>1</sub>	L <sub>2</sub>	L <sub>3</sub>	W <sub>1</sub>	W <sub>2</sub>	Hex	
<b>CC</b>	1	1/4 BSPT	21.0	8.0	28.0	20.0	9.7	15.6	16.0	–	44.0
<b>CE</b>	1	3/8 BSPT	26.7	11.0	36.0	25.0	10.1	23.2	22.0	–	101.0
<b>CG</b>	2	1/2 BSPT	40.0	20.0	56.0	33.5	13.2	32.0	48.0	19	370.0
<b>CK</b>	2	3/4 BSPT	57.0	23.5	65.5	38.5	14.5	40.0	63.0	27	830.0
<b>CM</b>	2	1 BSPT	66.0	27.3	85.0	48.5	16.8	55.0	78.0	36	1.581.0

Spray angle	Ordering no.							Bore diameter B [mm]	Narrowest free cross sections Ø [mm]	V̇ water [l/min]						Spray diameter D [mm] (at p = 2 bar)		
	Type	Mat. no.		Code						p [bar]						H = 250 [mm]	H = 500 [mm]	
		H1	30	1/4 BSPT	3/8 BSPT	1/2 BSPT	3/4 BSPT			1 BSPT	0.5	1.0	2.0	3.0	5.0			10.0
		Stainless steel 1.4408	Brass															
60°	<b>422.644</b>	●	●	<b>CE</b>				3.00	3.00	2.00	2.83	<b>4.00</b>	4.90	6.32	8.94	300	580	
90°	<b>422.406</b>	●	●	<b>CC</b>				1.40	1.40	0.50	0.71	<b>1.00</b>	1.22	1.58	2.24	430	800	
	<b>422.486</b>	●		<b>CC</b>				1.85	1.85	0.80	1.13	<b>1.60</b>	1.96	2.53	3.58	450	820	
	<b>422.566</b>	●	●	<b>CC</b>				2.25	2.25	1.25	1.77	<b>2.50</b>	3.06	3.95	5.59	470	840	
	<b>422.606</b>	●	●	<b>CE</b>				2.55	2.55	1.57	2.23	<b>3.15</b>	3.86	4.98	7.04	480	860	
	<b>422.646</b>	●	●	<b>CE</b>				2.90	2.90	2.00	2.83	<b>4.00</b>	4.90	6.32	8.94	500	880	
	<b>422.726</b>		●	<b>CE</b>				3.70	3.70	3.15	4.45	<b>6.30</b>	7.72	9.96	14.09	520	910	
	<b>422.766</b>	●		<b>CE</b>				4.15	4.15	4.00	5.66	<b>8.00</b>	9.80	12.65	17.89	520	910	
	<b>422.806</b>		●	<b>CE</b>				4.65	4.65	5.00	7.07	<b>10.00</b>	12.25	15.81	22.36	520	910	
	<b>422.846</b>	●	●	<b>CE</b>				5.10	5.10	6.25	8.84	<b>12.50</b>	15.31	19.76	27.95	520	910	
	<b>422.886</b>	●	●	<b>CE</b>				5.85	5.85	8.00	11.31	<b>16.00</b>	19.60	25.30	35.78	520	910	
<b>422.966</b>	●			<b>CG</b>				8.00	8.00	12.50	17.68	<b>25.00</b>	30.62	39.53	55.90	520	910	



Spray angle	Ordering no.								Bore diameter B [mm]	Narrowest free cross sections Ø [mm]	V̇ water [l/min]						Spray diameter D [mm] (at p = 2 bar)	
	Type	Mat. no.		Code							p [bar]						H = 250 [mm]	H = 500 [mm]
		H1	30	1/4 BSPT	3/8 BSPT	1/2 BSPT	3/4 BSPT	1 BSPT			0.5	1.0	2.0	3.0	5.0	10.0		
		Stainless steel 1.4408	Brass															
120°	422.488		●	CC					1.90	1.90	0.80	1.13	<b>1.60</b>	1.96	2.53	3.58	670	1,200
	422.568	●	●	CC					2.45	2.40	1.25	1.77	<b>2.50</b>	3.06	3.95	5.59	700	1,230
	422.608		●		CE				2.70	2.70	1.57	2.23	<b>3.15</b>	3.86	4.98	7.04	710	1,250
	422.728	●	●		CE				4.00	3.90	3.15	4.45	<b>6.30</b>	7.72	9.96	14.09	770	1,360
	422.808	●			CE				4.90	4.90	5.00	7.07	<b>10.00</b>	12.25	15.81	22.36	830	1,490
	422.848	●	●		CE				5.30	5.30	6.25	8.84	<b>12.50</b>	15.31	19.76	27.95	860	1,550
	422.888	●	●		CE				6.60	6.00	8.00	11.31	<b>16.00</b>	19.60	25.30	35.78	880	1,570
	422.928	●				CG			7.30	7.30	10.00	14.14	<b>20.00</b>	24.49	31.62	44.72	890	1,580
	422.968	●	●			CG			8.00	8.00	12.50	17.68	<b>25.00</b>	30.62	39.53	55.90	890	1,590
	423.008	●				CG			8.70	8.70	15.75	22.27	<b>31.50</b>	38.58	49.81	70.44	890	1,590
	423.128	●					CK		12.70	12.30	31.50	44.55	<b>63.00</b>	77.16	99.61	140.87	890	1,590
423.208	●						CM	17.00	16.00	50.00	70.71	<b>100.00</b>	122.47	158.11	223.61	890	1,590	

Conversion formula for this series:  $\dot{V}_2 = \dot{V}_1 \cdot \sqrt{\frac{p_2}{p_1}}$

Ordering Type + Material no. + Code = Ordering no.  
 example: 422.488 + 30 + CC = 422.488.30.CC



Assembly accessories can be found in Chapter 9 "Accessories".

