



SMART EYE Optical equipment for precise guide setting and alignment

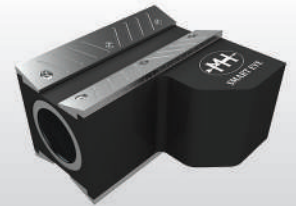
Morgårdshammar Guide Systems has developed a new digital camera based setting system for setting and alignment of roller guides. The compact design of Smart eye enables us to adapt the system to any roller guide and rolling mill brand. It is user friendly, fast and gives an accurate setting without the need for a computer. It is an absolute must to control the setting and alignment of your guides in order to ensure highest possible yield, good tolerances, surface finish, minimize wear on your wire rod block and roller guide equipment.

Smart eye enables highly precise centering, gap setting and automatic verification of the rollers geometry against predetermined criteria.

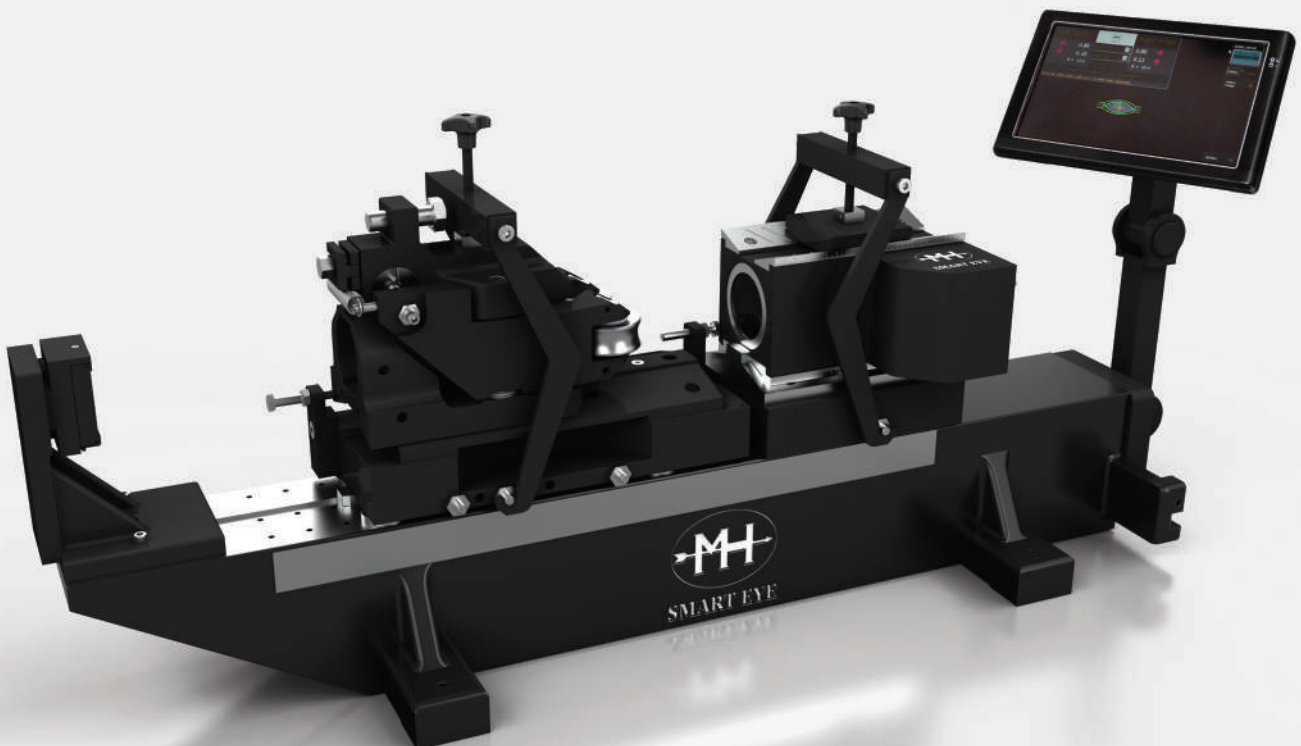
The digital camera can as well see if the roller guide is positioned correctly in front of the mill groove. You can also check and verify the setting of the mill stand.

Features

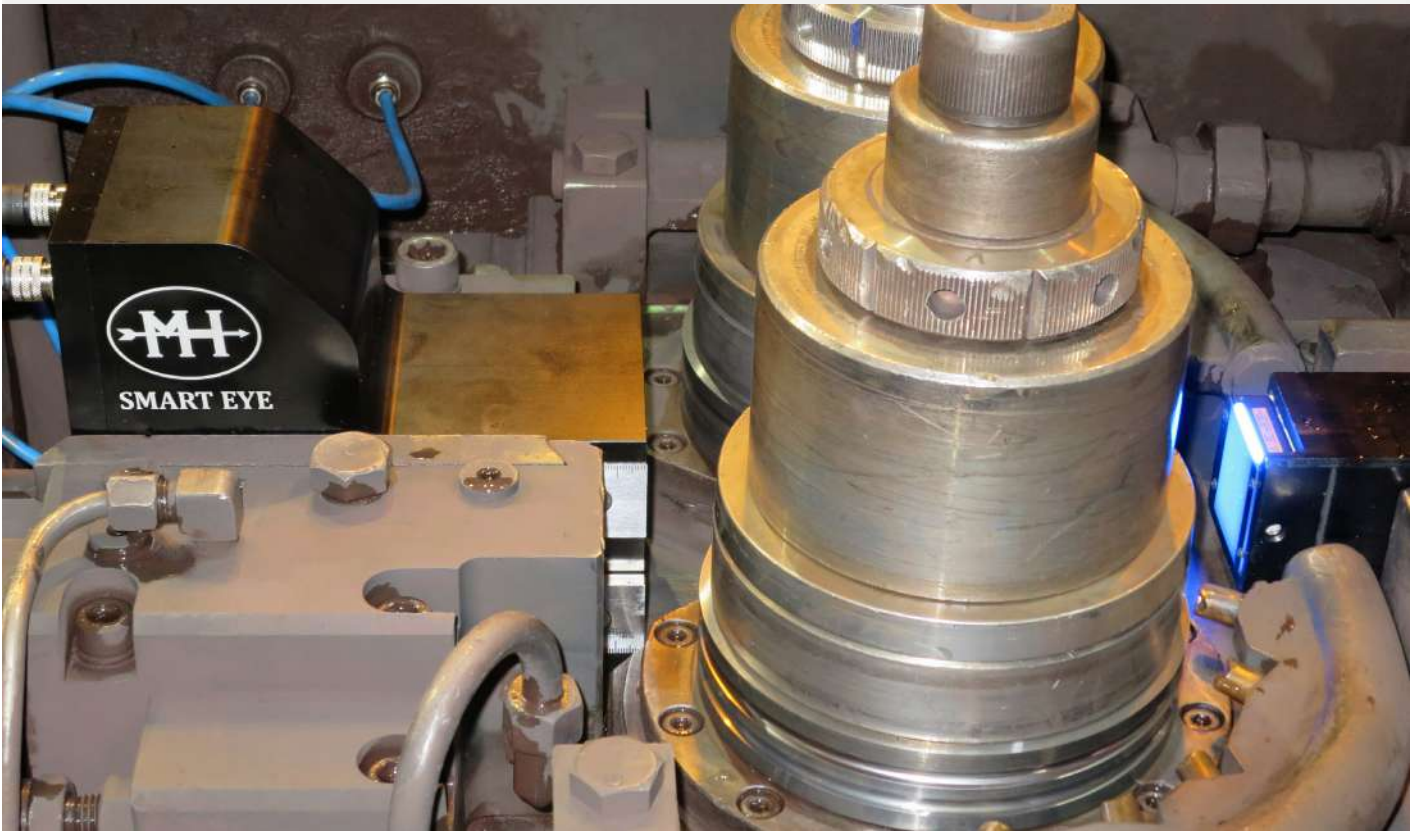
- > Precise calibration.
- > Library of predetermined recipes.
- > Add and change recipes.
- > Traceability for workshop settings.
- > Compact design.
- > Can be adapted to most brands of roller guides and mills.
- > User friendly interface.
- > Repeatable setting, operator independent
- > Collimated back light.
- > Digital upgrade of existing AP1C bench or as new installation.



SMART EYE
>digital optical
settings<



SMART EYE Optical equipment for precise guide setting and alignment



Smart eye consists of a portable camera unit, protective case with built in high capacity battery pack and screen, bench with screen and a collimated LED backlight source especially developed for optics. The portable camera is a high-resolution camera which is IP67 protected to withstand the hostile environment of a rolling mill, and the same camera can be used on the bench as well as in the wire rod block.

A high speed data cable between camera and screen guarantees a secure data transfer / live video between camera and screen.

Library of different recipes for guide settings are stored in the camera for easy and fast access. You can add and change recipes. After a setting is made it can be saved for traceability.



The screens user friendly interface projects a clear image of the rollers position and how they should be adjusted to the correct position.

